

## Labelling and fitting service



DL



# Labelling and fitting service

## Economic labelling - quick and conforming to standards

**Many companies are ill-equipped when it comes to correct and cost-effective labelling of cables in control cabinets and elsewhere.**

We are all familiar, whether from the home or the office, with the maze of cables tangled behind and under the PC because so many peripheral devices have to be connected to the central unit - from the printer to the scanner and the speakers to the USB connection. Only in precious few cases are cables labelled, meaning confusion the rest of the time when changes or modifications are to be made.



Such negligence is unthinkable in industry. That's why there are precise regulations specifying how the individual cables, conduits and tubes are to be labelled in wiring harnesses or looms. After all, it is both desirable and imperative for the technician to know immediately what is in the control cabinet, railway carriage or behind the panelling in the aircraft. In the majority

of cases, such regulations do not merely state that labelling is mandatory but they also specify the precise nature of the labelling. Indeed, those requirements can differ greatly in terms of inscription method, typefaces and base material. Another factor to consider is that the labelling plates often have to be produced in bulk.

### All-round service from Murrplastik

A company that develops, installs and commissions control systems, for example, is in many cases not in a position to handle the mandated -- and often very different -- labelling, either in terms of the equipment, manpower and time required. Murrplastik Systemtechnik GmbH is ready to handle this task for you - in the correct way, with the correct material and, above all, quickly and without undue inconvenience to the customer.



In its service centre, Murrplastik always applies the correct labelling method to fulfil the requirement. Inscription is handled using lasers, plotters, thermal lamination and laser printing technology as well as engraving. Laser technology is synonymous with high operating speeds, su-

preme quality, short processing times and crisp typefaces. Plotter technology boasts a very high configuration capacity and is suitable for virtually any material. Laser printing technology lends itself well to sheet labels, which in turn are suitable for virtually all fields of application. Colour printing is no problem either. Engraving technology is used for metals and suitable plastic-coated materials.



### Convenient and secure data exchange

It is remarkably easy to transmit labelling data. Simply send it to our service centre by e-mail, data carrier or fax. The data is then processed as quickly as possible by Murrplastik specialists and can be saved for up to two years for further projects on request. The data format options are virtually unlimited: ASCII format, files from MS Office applications (Word, Excel) and ACS labelling software data are all acceptable.

However, customised labelling is only one part of our all-round service package. Our specialists also fit labels in sleeves, assemble the holders and cable ties, undertake project-specific packing as prescribed, and much more - and they don't take all day.



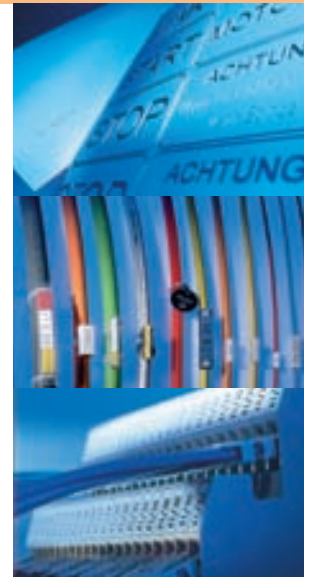
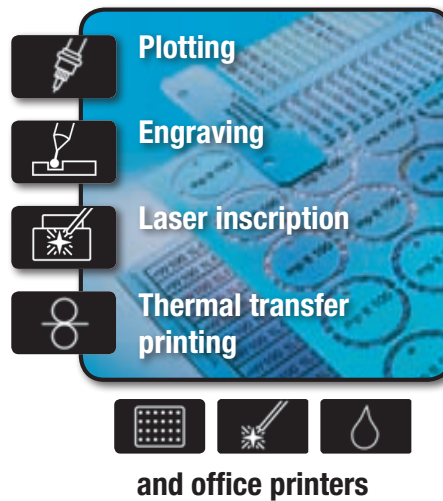
### Impressive credentials

For years now, many reputable firms in a very diverse range of sectors have been using this all-inclusive service offered by our company - the automotive industry, railway systems, control cabinet construction, general electrical engineering. The reason is obvious: each of these branches puts a supreme priority on economy and profitability!

We can inscribe:

- ☑ **Label plates**
- ☑ **Labels**
- ☑ **DuoMatt plates**

using the following technologies:



We fit the labels:

- ☑ **into label sleeves**
  - ☑ **with your label plates**
  - ☑ **for immediate application**
- on wires, cables and conduits

The benefits for you are obvious:

- ☑ **short processing times**
- ☑ **Rapid and cost-effective production**
- ☑ **Delivery within three working days**

Our email address for your projects is:

**dl@murrplastik.de**



Your orders arrive directly in the service centre and are processed on a day-to-day basis. You will receive the inscribed label plates and/or filled sleeves ready for immediate application. You send us your files by e-mail in one of the following formats:

**ASCII, Excel, ACS \*.mdb or ACS 2000 \*.pdb (further formats on request).**



# Labelling and fitting service

## Maximum quantities in minimum time

State-of-the-art equipment means that maximum quantities of label plates can be inscribed in minimum time.

## Full service

Murrplastik offers completely filled sleeves as well as individually inscribed label plates.



## High laser quality

... for supreme inscription quality on labels.  
Other inscription types are also offered.

## Transfer of labelling data

... from all CAE/CAD programs  
or EXCEL files is possible  
(additional formats by request).